

Northeast corner Section 11, Township 12 North, Range 70 West

CERTIFIED LAND CORNER RECORDATION

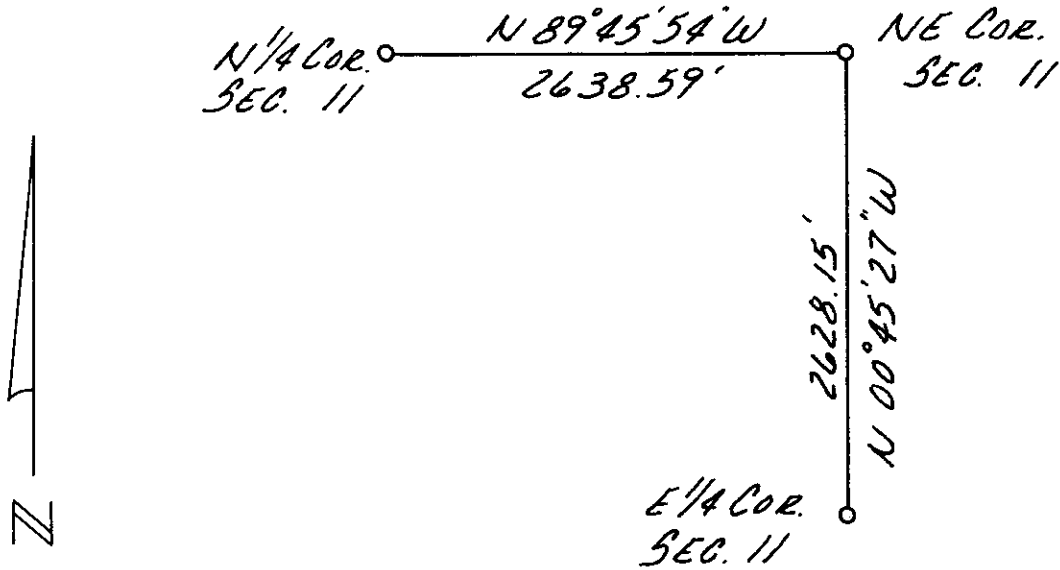
DESCRIPTION OF CORNER EVIDENCE FOUND, AND ORIGINAL RECORD (If known)

Original corner was lime stone 28" x 18" x 4" marked 1 notch on East 5 notches on South
Found stone 1' x 9" x 6" at intersection old North - South fence and old fence to West

DESCRIPTION OF MONUMENT AND ACCESSORIES ESTABLISHED TO PERPETUATE THE ORIGINAL LOCATION OF THIS CORNER:

Corner to ties
North 17.50 feet to nail and flagging in gate post
Northwest 0.6 feet to nail and flagging in corner post
West 16.55 feet to nail and flagging in fence post

SKETCH, WITH COURSE AND DISTANCE TO ADJACENT CORNER IF DETERMINED IN THIS SURVEY. (May Sketch or Paste Reproduction on Reverse Side.)



I, Neil M. Kruback certify that I have carefully performed or reviewed the work done on the diagrammed corner as reported on this recordation form and approve the same.

Neil M. Kruback
Signature of Surveyor

692
Registration No.

STATE OF WYOMING,
Office of Clerk and Recorder,
County of Taramie

This "corner record" was filed for record on the 18 day of December, 1973, was noted on the cross-index plat and is assigned page No. _____, in book No. _____.

Cross Index No.	County Official			Mer.
	E-21	T. 12 N	R. 70W 6th P	
_____	_____	_____	_____	Mer.
_____	_____	_____	_____	Mer.
_____	_____	_____	_____	Mer.
_____	_____	_____	_____	Mer.
_____	_____	_____	_____	Mer.
_____	_____	_____	_____	Mer.
_____	_____	_____	_____	Mer.

Photographed
Inspector B
Assessor

This document was filed for record
at 11 27 o'clock 4 M. on the
18 day of December
A. D. 1973 and duly recorded in
Book _____ on page _____

[Handwritten Signature]

County Clerk's Office
Re FB Deputy